

SAM 'K Steel' Professional American Pool Table



Assembly Instructions

Before beginning assembly, check all accessory bags and confirm all necessary parts are enclosed. Familiarise your self with the different components and which fasteners are required for which purposes. Mark out on the floor, where the frame is to be erected.

1) Assemble Base Frame

Unspin feet a couple of turns to allow a 13mm spanner to fit under the leg to adjust feet

Bolt 2 long sections to legs, do not tighten fully

Bolt 2 cross bearers to long sections, do not tighten fully

Bolt 2 end sections to legs, do not tighten fully

Ensure the threaded holes for the slate support bolts are uppermost on the steel frame sections.

Tighten all bolts.

Position frame before slates are fitted. Check cueing clearance around the table for final positioning. It is easier to move before the slates are in place!

2) Fit Aprons - Fit the arched panels between the legs

3) Locate Levellers

Level base frame on feet adjusters (13mm open end spanner on flats of the foot studs).

Fit the 24 nuts onto levelling bolts, into base frame.

Centre levelling bolts are already fitted on cross bearers

Insert the bolts from the underside. When bolt is through the frame and 3mm proud, sit the platform washers on top.

4) Position Slates

Place slates on top of the platform washers ensuring washers align correctly with the cut-outs on the tacking strips, (wooden strips on underside of slates), so when tightened they screw up to the slate.

Insert the pull down bolts through the countersunk holes in the slates and the frame below.

5) Level Slates

Start at the high point created earlier (after levelling frame) on first slate. Screw the platform level up to touch the slate. Bring the other 3 platform washers up to each corner of this slate with the levelling bolts. Mark 4 points on the slate and check the level at these same points throughout the process, with an engineering level. When level, fit nut and washer to each of the pull down bolts and tighten gently.

Tighten locking nuts on levelling bolts up to the frame. The level and position of the highest slate is now fixed.

Bring middle slate up to height and level as before using platform washers. Tighten up locking nuts and fit/tighten pull down bolt nuts.

Repeat with final slate. Double check all levels. Screw all levelling bolts up to touch the slate and tighten locking nuts. If any adjustments are required, always loosen pull down bolts first and screw levelling bolts slowly, ¼ turn at a time. Never make adjustments without slackening pull down bolts. Large adjustments made without loosening pull down bolts may result in cracked slates.

When overall level is achieved check all nuts and tighten up to slate.

Fill joints between slates. This can be done with plaster of Paris and very lightly sanded or scraped gently with a filling knife when dry. Alternatively, use beeswax/sealing wax and trim with a blade when set.

Check the pocket entry area of the slates. Lightly sand the pocket mouth if necessary, to ensure it is rounded and smooth. Smoother pocket entry reduces cloth wear on pocket lip.

6) Fit Bedcloth

Lay cloth over slate bed and staple at one end to the tacking strip. Stretch evenly to opposite end and staple/tack. Stretch gently on one side and secure. Stretch and secure on final side. Nick and trim pockets. Make a few cuts on the excess cloth to help relieve the tension when forming the pockets. On inside of pocket curve take a strip of excess matching cloth, invert and staple to tacking strip. Allow cloth to drop down, thus concealing all staples.

7) Fit Top Frame

Cut cloth at 24 holes to receive top frame bolts.

Fit blinds (panels) and blind corner sections to top frame.

(If top frame has been supplied disassembled - Lay all cushions upside down on a protective surface. Fit pocket plates to cushions. Fit blinds and corners).

Lift top frame onto bed. Bolts are already fitted to the top frame. Each rail has 4 bolts. These align with the 24 holes in the bed/cloth. Fit washer and nut loosely onto each bolt. Re check all levels. When satisfied, tighten all top frame nuts to secure the top.

8) Accessories & Cloth Marking

Fit ball storage rack under top frame & fit bridge holder & triangle rack.

Place a mark/spot at the intersection of imaginary end pocket to centre pocket lines.

Unwrap racking cues, scuff tips to remove rough edges and prepare tips to take chalk.

Place cues in rack, bridge (if supplied) & triangle/diamond in holder, chalk close to table.

Fixings Checklist

Bag 1) Base Frame Assembly (D) to Legs (E)

8 Screws Hex.din 933 M-8x20 - *To anchor central bar to external frame bars*

8 Nuts M-8

8 Washers 0 25x2 8mm

16 Screws Hex.din 933 M-10x25 - *To anchor leg to base frame*

16 Nuts M-10

16 Washers 30x3

Bag 2) Apron Assembly (F)

16 Screws 7976 R/CH6' 3x40 - *To attach aprons to legs*

16 Washers 30x3

8 Screws 7976 R/CH 0 6' 3x13 - *To anchor bracket support*

16 Short Screws

Bag 3) Slate Assembly (C)

14 Screw Thread Bar M-8x60 ZN - *To anchor slate to base frame*

14 Nuts 22x8 ZN

14 Washers 30x3

14 Nuts M-8

8 Screws M-8x90 - *To level slate*

20 Screws M-8x30

22 Levelling Caps 22x6

Bag 4) Rail apron Assembly & Ball Storage Rack (B)

24 Screws Alom/04x13 – *To attach vertical corner to apron*

2 Screws M-6 – *Storage Rack*

18 Screws 06' 3x16 – *To anchor apron*

Bag 5) Rail Assembly (A)

24 Screws R/Ch 06' 3x14 – *To anchor corner to profile*

10 Screws 03x14 Din 7983 – *To anchor pocket*

10 Screws 03'5x19

6 Screws 03'2x23

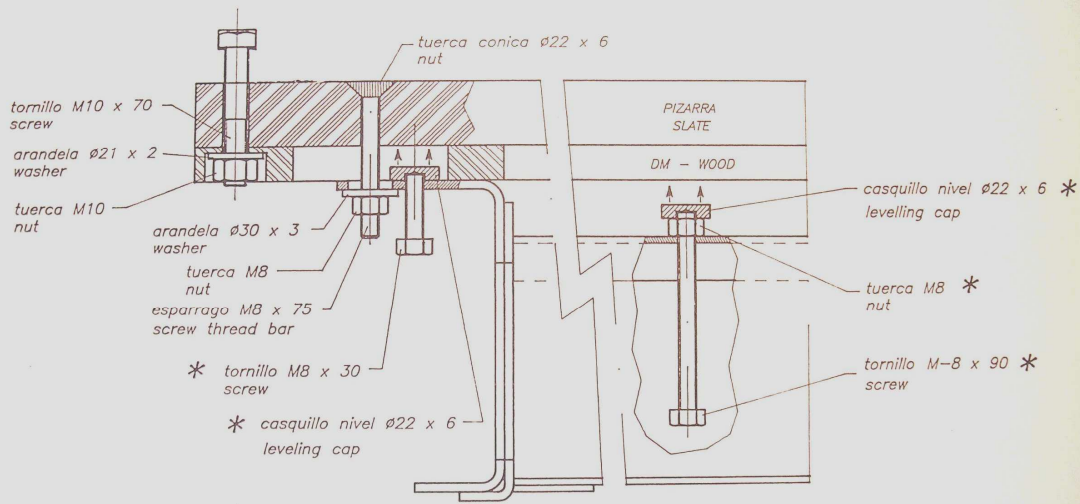
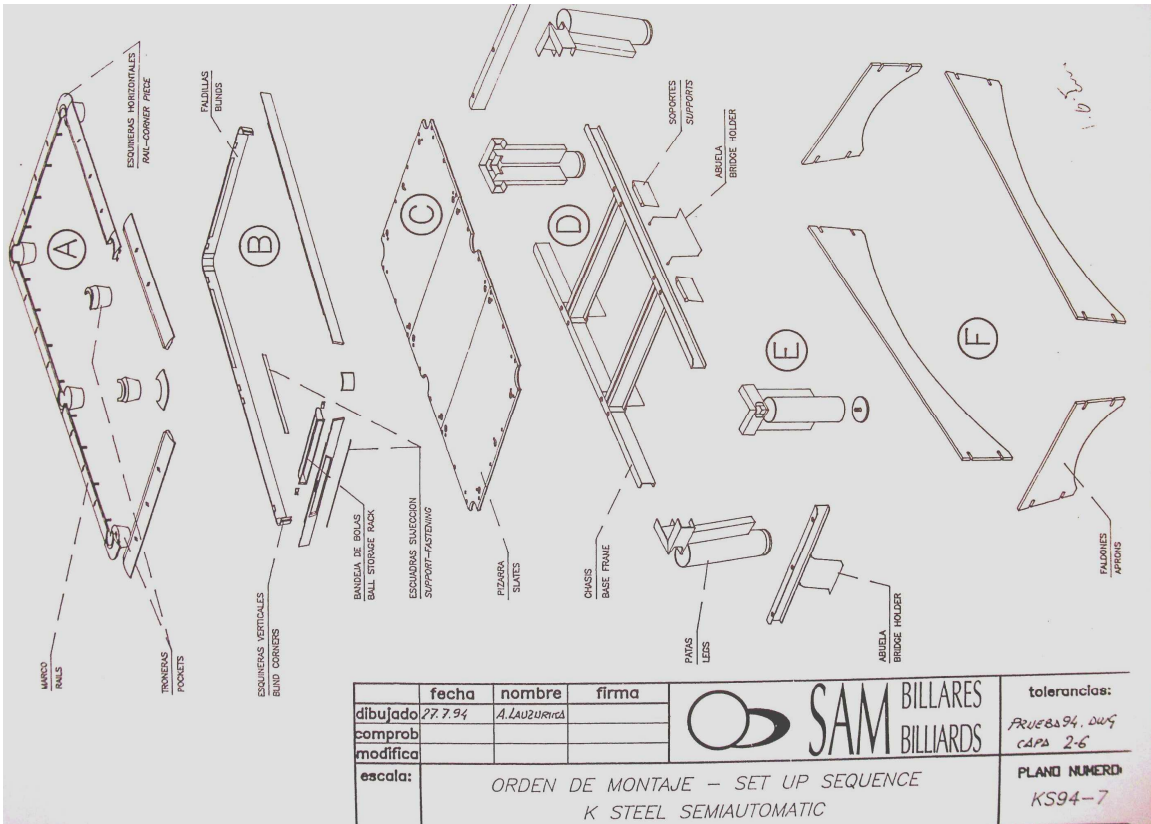
Bag 6) Rail Set(A), Aprons (B) Anchoring to Slates (C)

24 Screws Hex Din M-10x70

24 Nuts M-10

24 Washers 21x2 Din 127

24 Lock Washers 10 Din 127



* .- SE COLOCARAN
DESPUES DE HABER
MONTADO EL CHASIS

THESE SCREWS & CAPS
MUST BE FITTED AFTER
SETTING UP THE BASE
FRAME

	fecha	nombre	firma		tolerancias:
dibujado	27.6.94	A. LAUZURICA			D194FIN.DWG
comprob					CAPA 20-6-6
modifica					PLANO NUMERO:
escala:	1:2	PERFIL SUPERIOR K STEEL AUTOMATIC RETURN			KS94-00

SAM Leisure Coventry England
Tel +44 (0)24 7646 1234 Fax +44 (0)24 7646 4433
sales@samleisure.co.uk www.samleisure.co.uk